

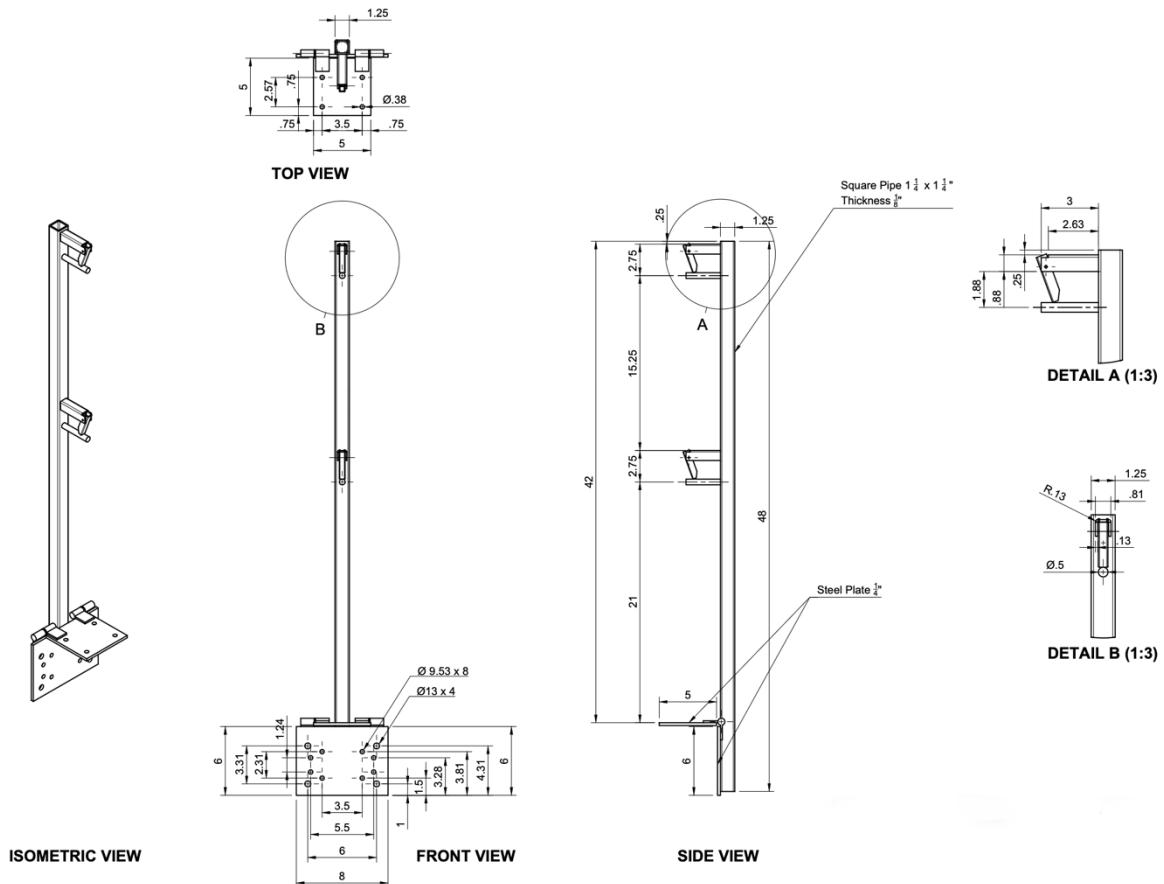


<b>MGS-02-102</b>	Hinged Guardrail Post – Steel Railing System
<b>Material</b>	Powder Coated Steel
<b>Dimensions</b>	1.25" x 1.25" x 48"
<b>Weight</b>	14.23 lbs



## DESCRIPTION

The **Hinged Guardrail Post for Steel Railing Systems** is a heavy-duty structural post designed to provide secure, compliant edge protection in industrial and commercial environments. Engineered for use with **steel guardrail rails**, this post features an integrated hinged base and dual rail connection points, allowing for fast installation, precise alignment, and adaptability to various site conditions.





## KEY FEATURES

- **Hinged base plate design** for easier installation and alignment
- **Dual rail connection brackets** for mid-rail and top-rail steel railing configurations
- **High structural rigidity** suitable for industrial safety applications
- **Compatible with steel guardrail rails** (round or square profiles, depending on system design)
- **Durable powder-coated finish** for corrosion resistance and long service life
- **Modular system component**, ideal for straight runs, corners, and terminations

## TECHNICAL SPECIFICATIONS

### Technical Specifications

- **Product Type:** Guardrail Post – Hinged Base
- **Application:** Steel guardrail/steel railing systems
- **Post Section:** Square structural steel tube
- **Base Type:** Hinged base plate with mechanical fixing points
- **Rail Connections:**
  - Top rail connection
  - Mid-rail connection
- **Mounting Method:** Surface-mounted with mechanical anchors (anchors not included)
- **Finish:** Industrial powder coating (high-visibility safety colour)
- **Material:** Structural carbon steel

## SAFETY & COMPLIANCE

When installed as part of a complete guardrail system, this post is intended to help meet or exceed applicable occupational safety requirements, such as:

- OSHA guardrail requirements
- CSA workplace safety regulations
- Local building and safety codes

*(Final compliance depends on system configuration, rail spacing, and site-specific installation.)*